

## **HIGH PERFORMANCE BUTTERFLY VALVES**



**PROFLOW H SERIES BUTTERFLY VALVES**

**PRO  
FLOW H** 

# Welcome to Effast

---

Effast by Polypipe is a well-established brand name that is recognised throughout both the industrial process market and construction industries for its market-leading range of thermoplastic pipework systems suitable for use within industrial applications.

Manufactured in Cicagna North Italy, the company now provides these components to customers all over the world and leads the way in the research and development of advanced new solutions that satisfy the specific needs of the market.

Supported by its large UK based manufacturing capabilities, Polypipe has developed Effast's comprehensive product portfolio such that it now offers a proven and effective solution to virtually any requirement. No matter what the project, the Effast range can offer the perfect combination of pressure pipe fittings, ball, butterfly, diaphragm and actuated valves, compression joints, adaptors and other fittings. Normally available in both metric and imperial dimensions these products are suited to many different applications in such areas as; food and beverage processing, chemical manufacture, water treatment, marine, spa and swimming pools, building technology and agriculture.

Outstanding performance and reliability have come to represent the hallmarks by which Effast products are recognised and with these products carrying accreditation and conforming to various European standards they can be specified with complete confidence. In addition, our manufacturing facilities in Italy are certified under the relevant ISO accreditations so you can be assured you'll receive not only outstanding performance, but outstanding quality too.

Dedicated to supporting its customers at every stage the company also complements its products and systems with full technical information and support service, while a nationwide distribution network means that products are readily available, even when needed next day. Get in touch and find out how we can support you on your next project.

## **EFFAST – Performance Under Pressure**

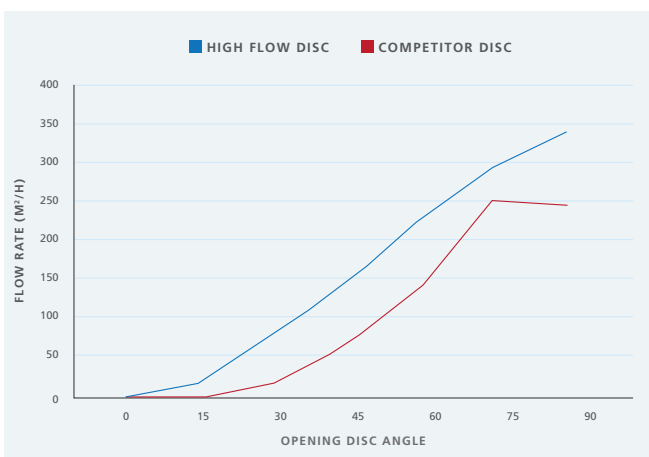
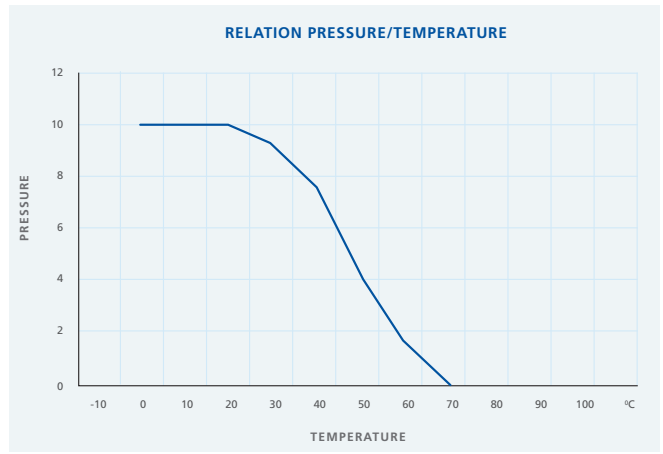
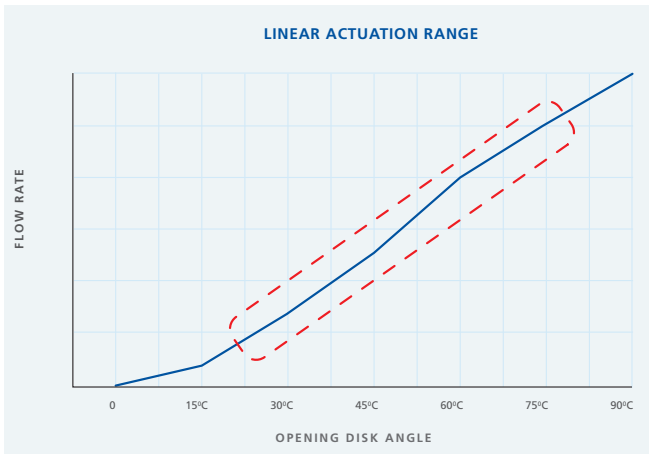
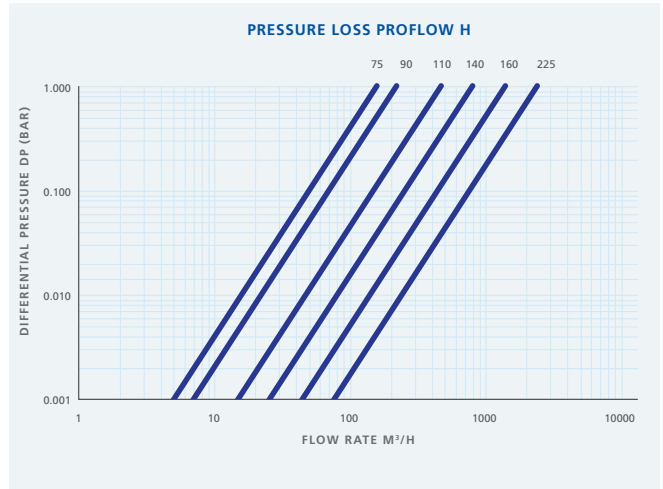
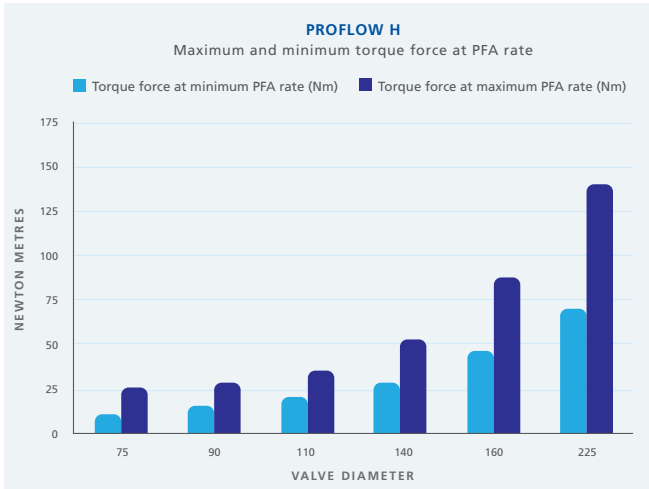
### **H Series Pro Flow High Performance Butterfly Valves**

The H series Pro Flow butterfly valves are ideal for high performance, shut-off or flow regulating applications. Their innovative design allows greater flow rates and reduces pressure drop across the valve.

They are easy to install too, whilst being resistant to corrosion at varying temperatures and chemical stresses. Making them ideal for water treatment solutions, filtration systems, swimming pools and irrigation systems.



# Technical Information



## FLOW COEFFICIENT KV (m<sup>3</sup>/h)

DN	65	80	100	125	150	200
ProFlow H	153	219	456	775	1.368	2.371

Tests performed by certified independent laboratory

# Features & Benefits



## High Flow Offset Disc

A patented high flow offset disc that has a unique design to allow for a greater flow rate in comparison to traditional discs. The external surfaces are free from sharp edges and ribs, and minimise the low pressure drops.

## Internal Gasket

The EPDM certified main gasket completely covers the body while the internal profile ensures a secure seal.

## Linear Control

The patented high flow offset disc allows a linear response resulting in greater central and excellent flow regulation.

## Key Benefits

- PVCu butterfly valve for water applications with high performances.
- The patented disc with offset shape has the greatest flow rate on the market and minimum low pressure drops.
- The offset disc allows a linear response and excellent flow regulation.
- The EPDM main gasket is a certified component that covers the body and ensures a secure seal.
- Shaft completely isolated from fluid.
- New valve closing system with safety lock system and 19 positions for accurate regulation.
- Easy system to actuate with only two bolts to disassemble the handle.
- Actuator ready in accordance to ISO5211.
- Control options: Hand operated; Gearbox; Pneumatic or Electric actuators.

# Valve Actuation & Closing System

## VALVE ACTUATION

DN	ISO 5211	A	d	Q	H
65	F07	70	9	14	16
80	F07	70	9	14	16
100	F07	70	9	14	16
125	F07	70	9	14	16
150	F07/F10	70/102	9/11	17	19
200	F07/F10	70/102	9/11	22	24



The regulating notch plate/handle can be easily removed for the mounting of an electric or pneumatic actuator, or for the fitting of a manual gearbox.



Electric Actuator

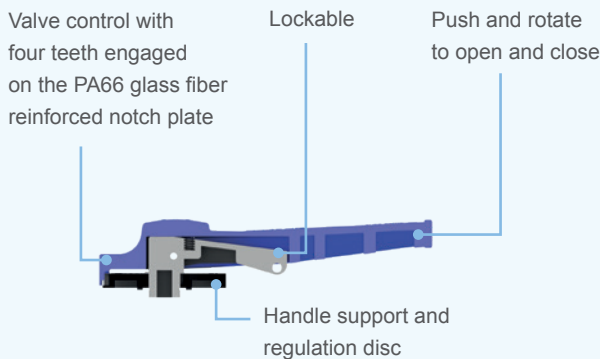
Pneumatic Actuator



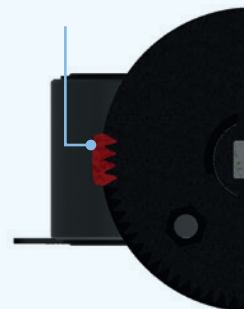
Gearbox

## Valve Closing System

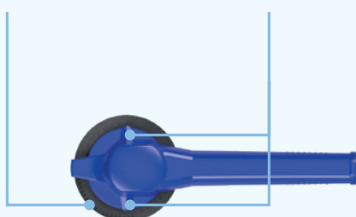
The design of the valve closing system makes it extremely easy to use, with 19 positions available between the opening and closing of the system. For a finer readjustment of the flow rate, the opening and closing of the system can be adjusted between 0° and 90°. When pushing the handle, the teeth that lock the valve into position are released. When the handle is released, the spring brings the handle back to the engaged position.



Four teeth are always engaged, ensuring the locking of the valve, even in the presence of vibration caused by high flows

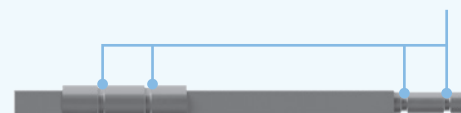


Twin scale 0°-90°  
Indicators of the degree of opening



Zinc Plated Carbon steel stem with square fit according to ISO5211

Four O-Rings ensure a secure seal



# Effast Pressure System Range

Effast Pressure Systems are suited to a wide range of Commercial and Industrial applications, with an extensive range of pipes, fittings and valves, easily and permanently assembled using solvent cement, electro-fusion weld or mechanical installation.

Applications include:

- Chemical
- Cold water services
- Slurry lines
- Water treatment
- Reactor cooling
- Available in PVCu, ABS, PPH or PE
- WRAS approved for use with potable water
- Valves available electrically or pneumatically actuated if required

PRODUCTS	RANGE
	From 3/8" to 4" BS
	From 20 mm to 110 mm; From 3/8" to 4" BSPP
	From 20 mm to 110 mm; From 1/2" to 4"
	From 16 mm to 110 mm; From 3/8" to 4"
	From 75 mm to 225 mm; From 2"1/2 to 8"
	From 75 mm to 225 mm; From 2"1/2 to 8"
	From 75 mm to 225 mm; From 2"1/2 to 8"

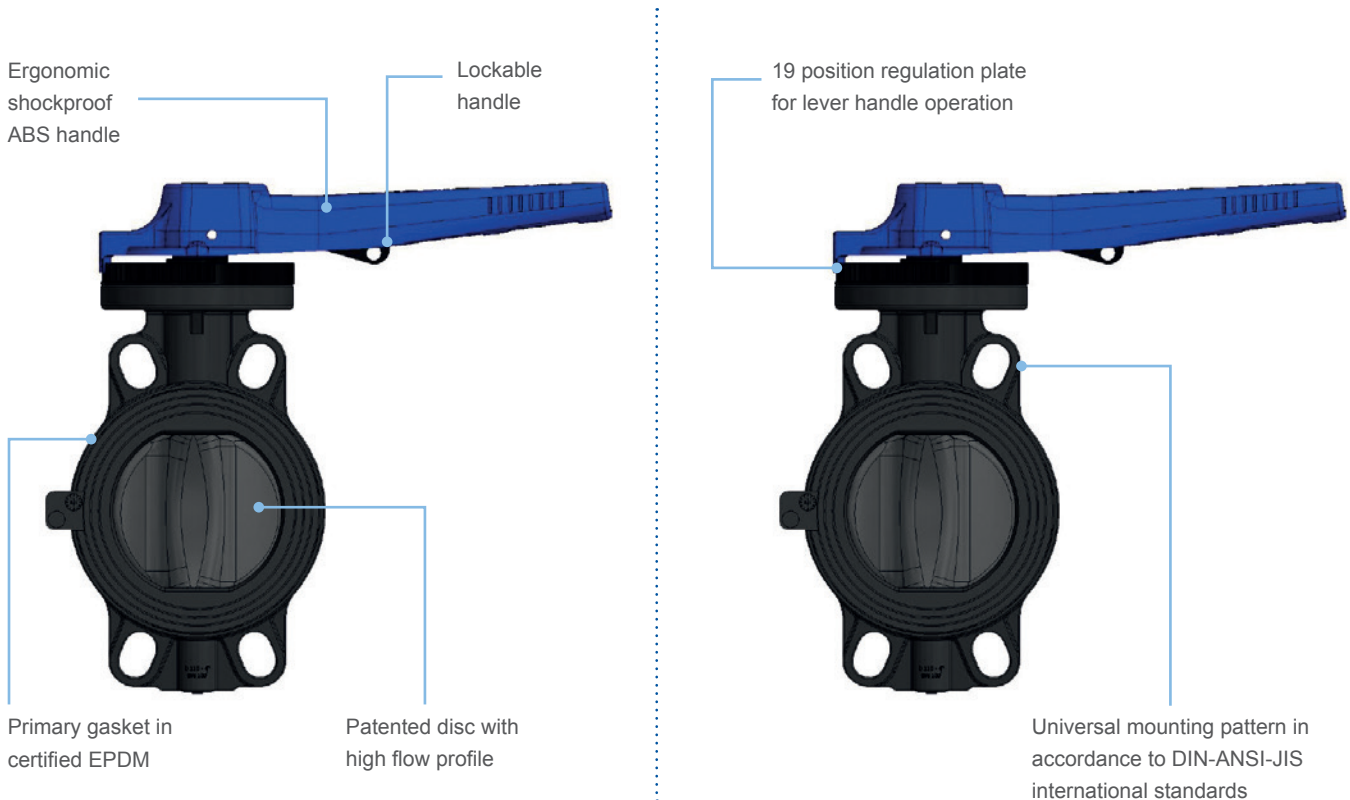
PRODUCTS	RANGE
	From 75 mm to 225 mm; From 2"1/2 to 8"
	From 20 mm to 110 mm; From 3/8" to 4"
	From 20 mm to 110 mm; From 3/8" to 4"
	From 20 mm to 110 mm; From 3/8" to 4"
	From 75 mm to 225 mm; From 2"1/2 to 8"
	From 20 mm to 63 mm; From 3/8" to 2"
	Large Tite (THF-free) and Tite'n Fast

# Butterfly Valve

## Technical Specification

### Butterfly Valve

The H series valves are manufactured incorporating a 19-position regulating plate and include electric and pneumatic actuators. They are strong, with a PVCu disc and body, zinc plated carbon steel stem and a gasket manufactured from EPDM.



### Technical Specification

TYPE OF VALVE	Closing or regulation flow butterfly valve with high flow disc and integrated seal
SIZE RANGE	DN65 - DN80 - DN100 - DN125 - DN150 - DN200
OPERATING PRESSURE	PN 10 at 20°C
OPERATING TEMPERATURE	0-60°C
COUPLING STANDARDS	Flanging system: EN ISO 1452, EN ISO 15493, DIN 2501, EN 1092-1; ASTM B16.5; JIS B2220 Actuator couplings: ISO 5211
VALVE MATERIAL	• Body: PVCu • Disc: PVCu • Stem: Zinc Plated carbon steel • Seals: EPDM
CONTROL OPTIONS	• Hand operated lever with 19 position regulating plate • Gearbox • Pneumatic actuator • Electric actuator

# Certifications

## Quality Marks

Our knowledge and expertise to bring innovation in all we do has helped us produce a specialist range of products and solutions that are always up to date with the very latest regulations and quality standards.



Quality Management System ISO 9001:2015 and Environmental Management System ISO 14001:2015, certified by Kiwa Cermet Italia for "Design and manufacturing of plastic fittings and valves through moulding and assembling processes; trading of accessories".



Product certificate Kiwa-UNI for PVC-U plastic fittings for water supply and for buried and above-ground drainage and sewerage under pressure, according to UNI EN ISO 1452-3.



Product certificate, issued in accordance with Kiwa Regulations for Product Certification, for Solvent cemented fittings of PVC-U, according to KIWA Evaluation Guideline BRL-K17301.



Certificate of conformity of PVC fittings according to DIN EN ISO 1452-3.



Certificate for plastic piping systems for water supply following the French standards NF EN ISO 1452-3, NF T 54-029.



BRITISH STANDARDS

Kitemark licence for PVC-U plastic piping systems for water supply, according to BS EN ISO 1452-3.



BRITISH STANDARDS

Kitemark licence for ABS plastic piping systems for water supply, according to BS 5392 part 1.



BUREAU VERITAS

Type Approval Certificate for thermoplastic material Pipes and Fittings on Marine Application.



Approvals for PVC-U and ABS range of fittings, PVC-U valves and solvent cement, according to the requirements of the United Kingdom Water Supply (Water Fittings) regulations and Scottish Water Byelaws.



Certificate according to the Guideline for Hygienic Assessment of Organic Materials in Contact with Drinking Water (KTW Guideline).



Attestation de Conformité Sanitaire for PVC-U raw material compound and PVC-U valves.



Russian Hygienic and Sanitary certificate.



Certified to NSF/ANSI 61

Certificate of compliance with NSF/ANSI 61 and all applicable requirements (for products appearing in NSF Official Listing).



Certificate of conformity for Valves in thermoplastic material, according to the requirements of Annex III, Module A2 of the Pressure Equipment Directive 2014/68/EU.

**Polypipe Effast**  
New Hythe Business Park  
College Road  
Aylesford ME20 7PJ  
United Kingdom  
Tel +44 (0) 1622 795225  
effast@polypipe.com

All descriptions and illustrations in this publication are intended for guidance only and shall not constitute a 'sale by description'. All dimensions given are nominal, while changes can be done on the information, products and specifications from time to time for a variety of reasons, without prior notice. The information in this publication is provided 'as is' on the revision date stated on the sheet. Updates will not be issued automatically. This information is not intended to have any legal effect, whether by way of advice, representation or warranty (express or implied). We accept no liability whatsoever (to the extent permitted by law) if you place any reliance on this publication you must do so at your own risk. All rights reserved. Copyright in this publication belongs to Polypipe and all such copyright may not be used, sold, copied or reproduced in whole or part in any manner in any media to any person without prior consent. **EFFAST** is a registered trademark.