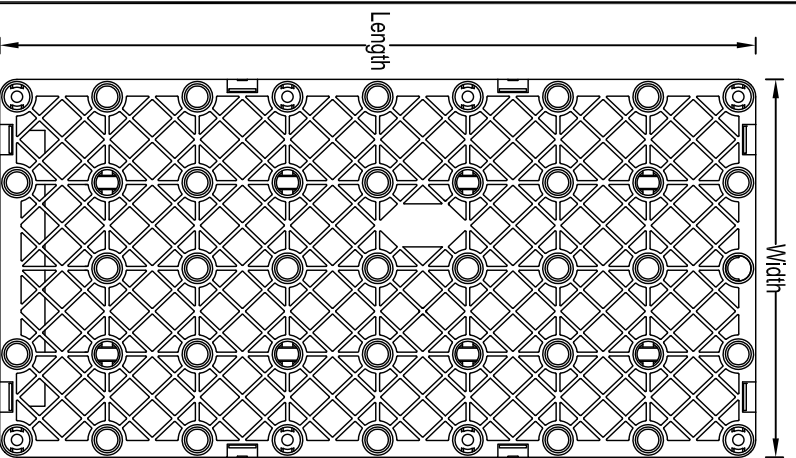
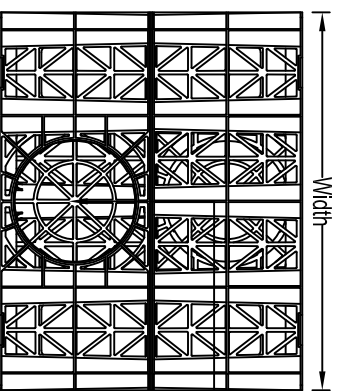


POLYSTORM CELLS
Product Code: PSM1, PSM1A & PSM2



PLAN VIEW

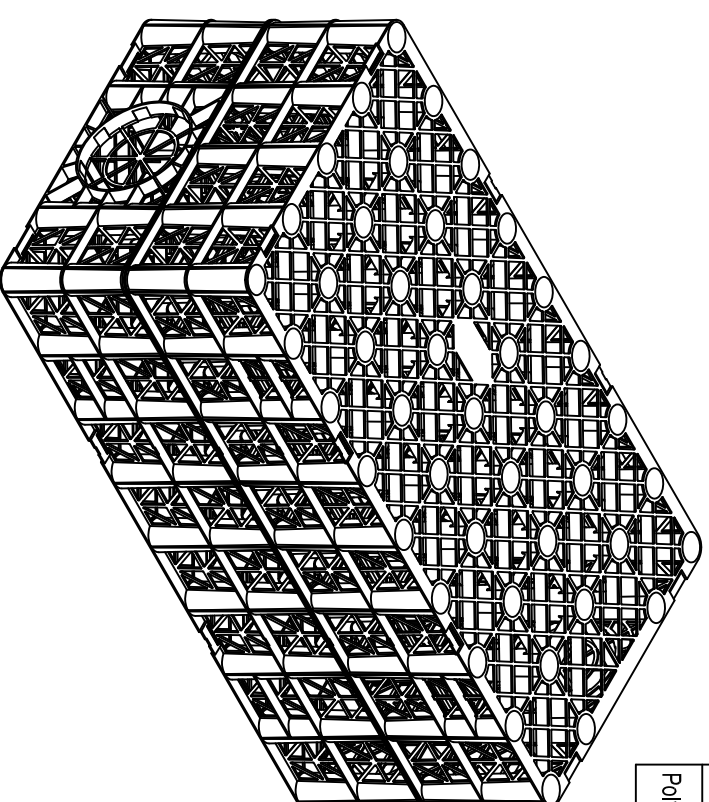
Scale 1:10



END ELEVATION

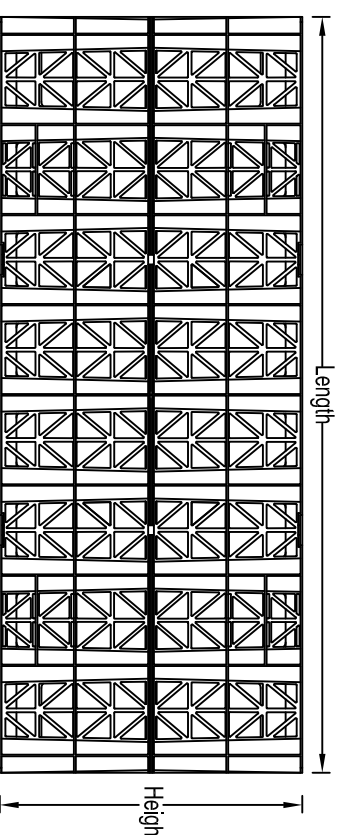
Scale 1:10

Recessed 'Knock-out'
accepts Ø160mm
BS EN 1401-1 pipe
Connecting pipe 1L
(160mm Ø BS EN 1401-1 pipe)



ISOMETRIC VIEW

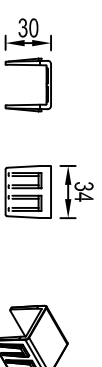
Scale 1:10



SIDE ELEVATION

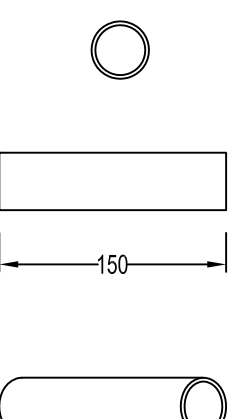
Scale 1:10

POLYSTORM TABLE									
NAME	CODE	LENGTH (mm)	WIDTH (mm)	HEIGHT (mm)	A (mm)	VERTICAL STRENGTH (kN/m ²)	LATERAL STRENGTH (kN/m ²)	COLOUR	MATERIAL
Polystorm	PSM1	1000	500	400	25	440	63	Grey	Prime Polypropylene
Polystorm - R	PSM1A	1000	500	400	25	610	63	Black	Recycled Polypropylene
Polystorm Lite	PSM2	1000	500	400	25	200	40	Black	Recycled Polypropylene



POLYSTORM CLIP

Scale 1:5



POLYSTORM SHEAR CONNECTOR

Scale 1:5

POLYSTORM SYSTEM NOTES

1. Polystorm units are available with either a Ø225mm or Ø300mm Riddrain socket upon request. Please refer to:- PSM_SD_004

NOTES

1. All dimensions in millimetres, unless otherwise stated.
2. All dimensions are nominal and may vary within manufacturing or construction tolerances.
3. All site temporary and enabling works by others.
4. Polypipe products to be installed in accordance with Polypipe civils recommendations (refer to Polypipe technical guidance for further information), giving due consideration to the requirements of the organisation who will be taking ultimate ownership of the installation.
5. This drawing is intended for guidance only. Confirmation of the information contained within this document should be sought from the consulting engineers before final design or construction activities commence.



Polypipe Civils

Charmwood Business Park,
North Road, Loughborough,
Leicestershire, LE11 1LE

Tel: 01509 615100
Fax: 01509 615215
www.polypipe.com/civils
www.polypipe.com/wms

PROJECT

POLYSTORM STANDARD DETAILS

STATUS

FOR INFORMATION

DATE

17/03/16

DRAWN BY

JL

TITLE

POLYSTORM GEOCELLULAR COMPONENT

ORIGINAL SIZE

A3

SCALE

AS SHOWN

DRAWING NO.

PSM_SD_001

REV.

The information in this document is of an illustrative nature and is supplied by Polypipe Civils without charge. This document does not form the whole or any part of a contract or intended contract with the user. The information within this document should not be solely relied upon to determine the suitability or installation requirements of our products for a proposed application and expected site conditions; expert advice should be sought in this respect. Final determination of the suitability of any information or material for the use contemplated and the manner of use is the sole responsibility of the user and the user must assume all risk and liability in connection therewith. Further information with regard to liabilities may be found at www.polypipe.com/discclaimer.