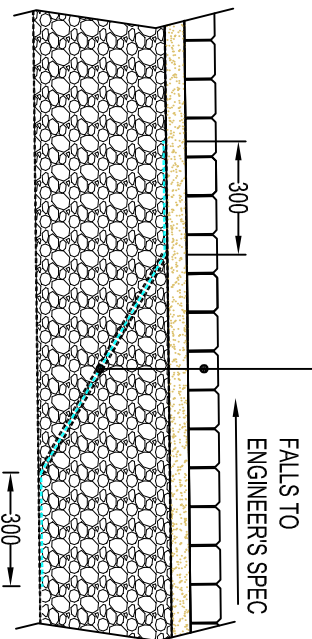


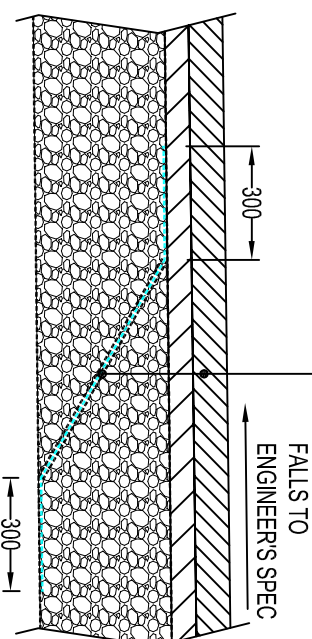
SURFACE COURSES TO ENGINEERS SPEC  
POLYPIPE IMPERMEABLE CHECKDAM LINED WITH POLYPIPE PERMATEX HEAVY DUTY PROTECTION FLEECE ON BOTH SIDES



**TYPICAL SECTION THROUGH PERVIOUS PAVEMENT WITH OPEN GRADED SUB-BASE AND IMPERMEABLE CHECKDAM DETAIL**

Scale (1:20)

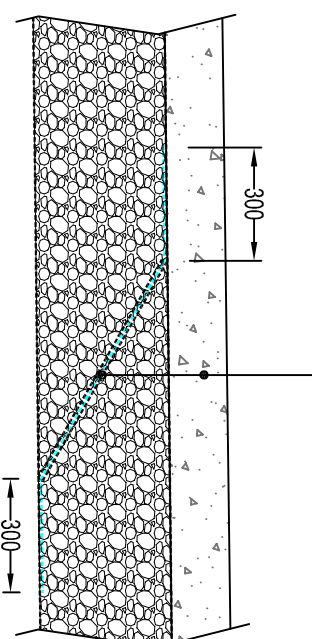
SURFACE COURSES TO ENGINEERS SPEC  
POLYPIPE IMPERMEABLE CHECKDAM LINED WITH POLYPIPE PERMATEX HEAVY DUTY PROTECTION FLEECE ON BOTH SIDES



**TYPICAL SECTION THROUGH IMPERVIOUS PAVEMENT WITH OPEN GRADED SUB-BASE AND IMPERMEABLE CHECKDAM DETAIL**

Scale (1:20)

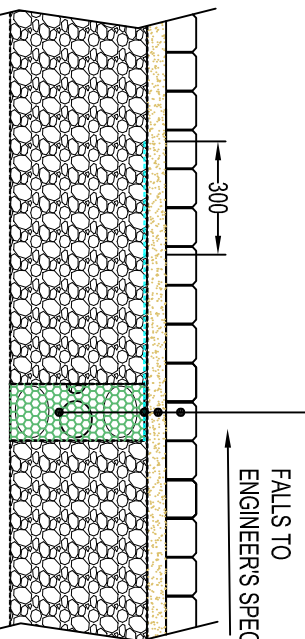
SURFACE COURSES TO ENGINEERS SPEC  
POLYPIPE IMPERMEABLE CHECKDAM LINED WITH POLYPIPE PERMATEX HEAVY DUTY PROTECTION FLEECE ON BOTH SIDES



**TYPICAL SECTION THROUGH IMPERVIOUS PAVEMENT WITH OPEN GRADED SUB-BASE AND IMPERMEABLE CHECKDAM DETAIL**

Scale (1:20)

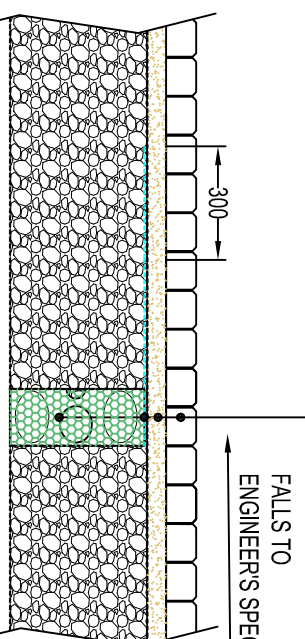
SURFACE COURSES TO ENGINEERS SPEC  
POLYPIPE IMPERMEABLE MEMBRANE CHECKDAM LINED WITH HEAVY DUTY PROTECTION FLEECE ON BOTH SIDES  
POLYPIPE PERMAFOAM CHECK GATE 150mm THICK. FULLY ENCAPSULATED IN PERMAFILTER SUDS GEOTEXTILE



**TYPICAL SECTION THROUGH PERVIOUS PAVEMENT WITH OPEN GRADED SUB-BASE WITH MEMBRANE CHECKDAM AND PERMAFOAM CHECKGATE (LOW FLOW)**

Scale (1:20)

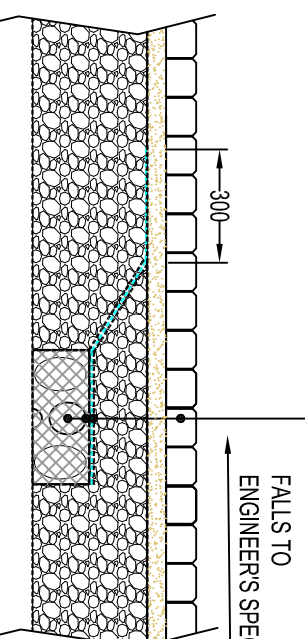
SURFACE COURSES TO ENGINEERS SPEC  
POLYPIPE IMPERMEABLE MEMBRANE CHECKDAM LINED WITH HEAVY DUTY PROTECTION FLEECE ON BOTH SIDES  
POLYPIPE PERMAFOAM CHECK GATE 150mm THICK. FULLY ENCAPSULATED IN PERMAFILTER SUDS GEOTEXTILE



**TYPICAL SECTION THROUGH PERVIOUS PAVEMENT WITH OPEN GRADED SUB-BASE WITH MEMBRANE CHECKDAM AND POLYPIPE PERMAVOID CHECKGATE (MEDIUM FLOW)**

Scale (1:20)

SURFACE COURSES TO ENGINEERS SPEC  
POLYPIPE IMPERMEABLE MEMBRANE CHECKDAM LINED WITH HEAVY DUTY PROTECTION FLEECE ON BOTH SIDES  
POLYPIPE PERMAFOAM CHECK GATE 150mm THICK. FULLY ENCAPSULATED IN 2mm TEXTILE MESH



**TYPICAL SECTION THROUGH PERVIOUS PAVEMENT WITH OPEN GRADED SUB-BASE WITH MEMBRANE CHECKDAM AND POLYPIPE PERMAVOID CHECKGATE (FAST FLOW)**

Scale (1:20)

**NOTES**

1. All dimensions in millimetres, unless otherwise stated.
2. All dimensions are nominal and may vary within manufacturing tolerances.
3. All site temporary and enabling works by others.
4. Permavoid units to be installed in accordance with Polypipe Civils recommendations (refer to Polypipe technical guidance for further information); giving due consideration to the requirements of the organisation who will be taking ultimate ownership of the installation.
5. This drawing is intended for guidance only. Confirmation of the information contained within this document should be sought from the consulting engineers before final design or construction activities commence.

| REV | AMENDMENT | DATE |
|-----|-----------|------|
|     |           |      |

**FOR INFORMATION**

| STATUS          | DATE     | DRAWN BY |
|-----------------|----------|----------|
| FOR INFORMATION | 27/10/15 | BM       |
| ORIGINAL SIZE   | SCALE    | AS SHOWN |
| A3              | AS SHOWN |          |
| DRAWING NO.     | REV.     |          |
| PV_SD_AT_MC_002 |          |          |



**Polypipe Civils**

Charnwood Business Park,  
North Road, Loughborough,  
Leicestershire, LE11 1LE

Tel: 01509 615100  
Fax: 01509 615215  
www.polypipe.com/civils  
www.polypipe.com/wms

PROJECT

PERMAVOID STANDARD DETAIL

TITLE

PERMAVOID CHECKDAM DETAIL

The information in this document is of an illustrative nature and is supplied by Polypipe Civils without charge. This document does not form the whole or any part of a contract or intended contract with the user. The information within this document should not be solely relied upon to determine the suitability or installation requirements of our products for a proposed application and expected site conditions; expert advice should be sought in this respect. Final determination of the suitability of any information or material for the use contemplated and the manner of use is the sole responsibility of the user and the user must assume all risk and liability in connection therewith. Further information with regard to liabilities may be found at [www.polypipe.com/disclaimer](http://www.polypipe.com/disclaimer).