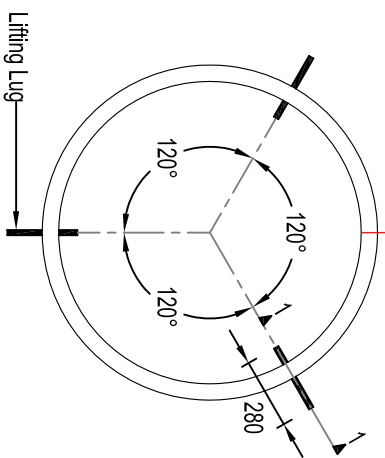
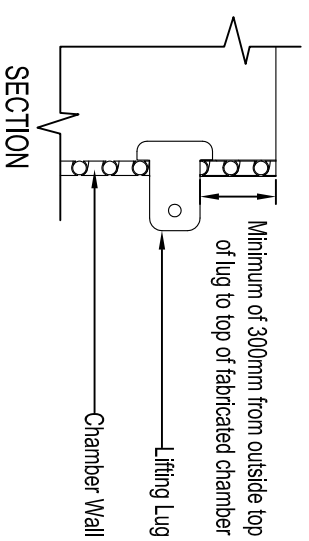


Orientated towards main body of mass in un-symmetrical chambers



PLAN

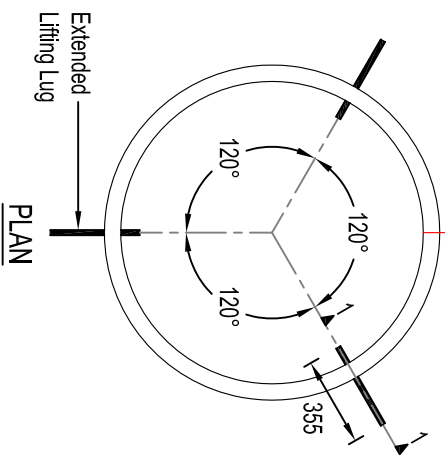
Lifting points evenly spaced around the circumference of the pipe. Suitability and location of lifting points to be confirmed depending on weight and shape of the fabricated unit.



SECTION

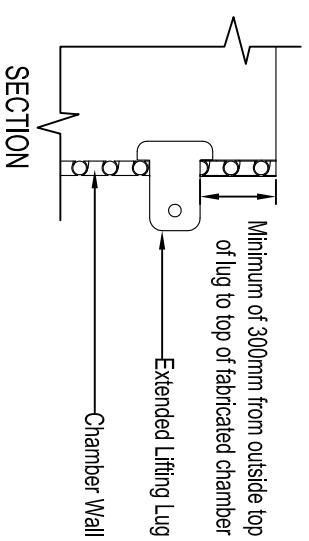
STANDARD LIFTING POINT - TYPICAL DETAIL
Scale (1:30)

Orientated towards main body of mass in un-symmetrical chambers



PLAN

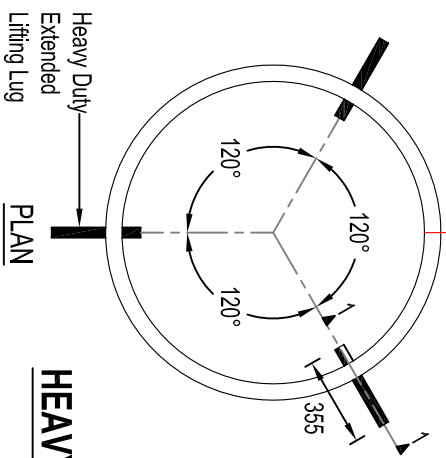
Lifting points evenly spaced around the circumference of the pipe. Suitability and location of lifting points to be confirmed depending on weight and shape of the fabricated unit.



SECTION

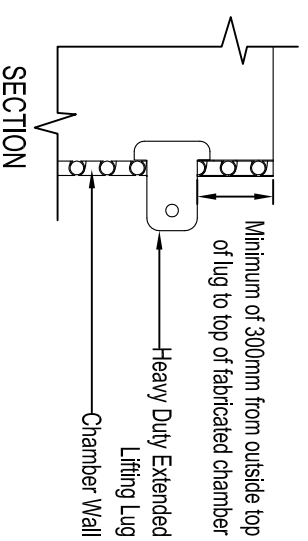
EXTENDED LIFTING POINT - TYPICAL DETAIL
Scale (1:30)

Orientated towards main body of mass in un-symmetrical chambers



PLAN

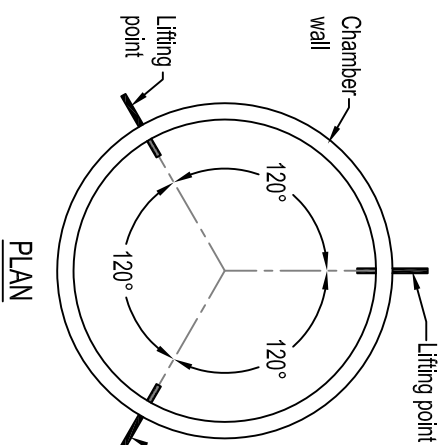
Lifting points evenly spaced around the circumference of the pipe. Suitability and location of lifting points to be confirmed depending on weight and shape of the fabricated unit.



SECTION

HEAVY DUTY EXTENDED LIFTING POINT - TYPICAL DETAIL
Scale (1:30)

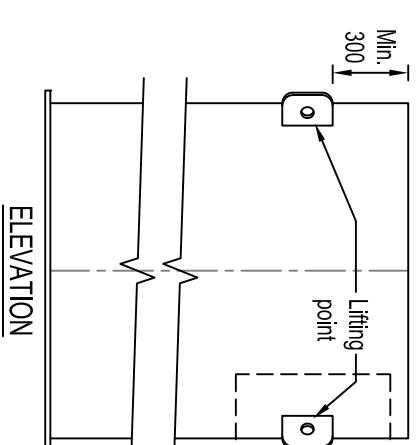
The information in this document is of an illustrative nature and is supplied by Polypipe Civils without charge. This document does not form the whole or any part of a contract or intended contract with the user. The information within this document should not be solely relied upon to determine the suitability or installation requirements of our products for a proposed application and expected site conditions; expert advice should be sought in this respect. Final determination of the suitability of any information or material for the use contemplated and the manner of use is the sole responsibility of the user and the user must assume all risk and liability in connection therewith. Further information with regard to liabilities may be found at www.polypipe.com/disclaimer.



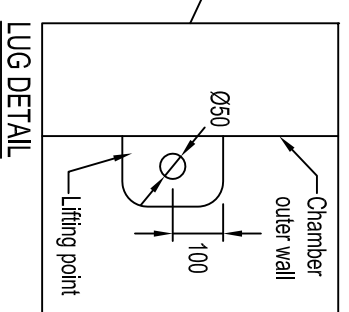
PLAN

NOTE

- i) Reference should be made to the latest edition of Polypipe Ridgistorm-XL Chamber Lifting Instruction & Guidance document.
- ii) All three Ridgistorm-XL lifting points to be utilised during lifts.
- iii) 1500Kg SWL when all three Ridgistorm-XL lifting points utilised.



ELEVATION



LUG DETAIL

TYPICAL LIFTING POINT DETAIL
Scale (1:30)

LIFTING POINT GUIDANCE

Lifting Point	SWL (kg)	Pipe Diameter (mm)
Standard	1500	1050 - 1800
Extended	1500	2100 - 3000
Heavy Duty	2500	2100 - 3000

- NOTES - Lifting Lugs**
1. This document should be read in conjunction with the latest edition of the Polypipe Ridgistorm-XL Lifting guidance document.
 2. The lift supervisor must assess and plan the chamber lift. Where the construction of the chamber results in an off-centre load the chamber will rotate from level when only lifted by the three points provided. In these circumstances the lift supervisor must use additional slings and/or other controls where deemed necessary to ensure a safe and level lift.
 3. Polypipe are not liable for any lift carried out by a third party.
 4. Polypipe Civils can supply access chambers with pre-installed lifting lugs; subject to technical assessment.

NOTES

1. All dimensions in millimetres, unless otherwise stated.
2. All dimensions are nominal and may vary within manufacturing or construction tolerances.
3. All site temporary and enabling works by others.
4. Ridgistorm-XL units to be installed in accordance with Polypipe Civils recommendations (refer to Polypipe technical guidance for further information); giving due consideration to the requirements of the approving and adopting organisation(s) who will be taking ultimate ownership of the installation.
5. Dimensions are based on a minimum stiffness class SN2 pipe; corresponding to the standardised pipe profiles current at the time of this drawing's issue.
6. This drawing is intended for guidance only. Confirmation of the information contained within this document should be sought from the consulting engineers before final design or construction activities commence.
7. Unless otherwise stated, all Ridgistorm-XL is supplied to site without direct means of lifting incorporated. The lift supervisor must assess and plan the lift, in the circumstances of the lift, and provide slings and/or other controls as deemed necessary to ensure a safe lift.
8. Minimum and maximum chamber depths applicable, dependant on project specification and fabrication restrictions.



Polypipe Civils

Charmwood Business Park,
North Road, Loughborough,
Leicestershire, LE11 1LE

Tel: 01509 615100
Fax: 01509 615215
www.polypipe.com/civils
www.polypipe.com/wms

PROJECT COMPONENT MANHOLE STANDARD DETAILS

STATUS

FOR INFORMATION

DATE

16/03/16

DRAWN BY

JL

ORIGINAL SIZE

A3

SCALE

AS SHOWN

RIDGISTORM-XL LIFTING POINTS DETAIL

DRAWING NO.

RST_SD_CM_001

REV.